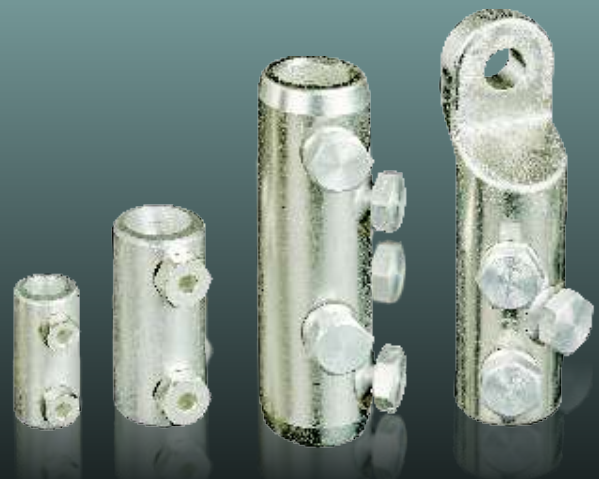




ELECTRO CRIMP CONTACTS (I) PVT. LTD.

www.eccipl.com 

**Mechanical/
Screw
Connectors
& Lugs**





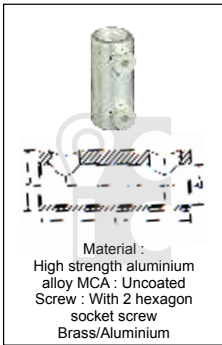
ELECTRO CRIMP CONTACTS (I) PVT. LTD

MECHANICAL CONNECTOR 0.6/1 kV with 2 HEXAGON SOCKET SCREWS OR 2 SHEAR-OFF-HEAD BOLTS AND OIL STOP



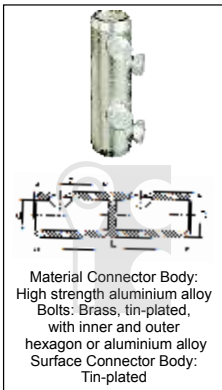
CABLE SIZE mm ² Al in mm ² acc. To VDE 0295				DIMENSIONS mm			Torque Moment in Nm	PRODUCT CODE
Round Stranded	Sector Stranded	Round Solid	Sector Solid	L	D	d		
16-35	16-25	16-25	16-35	40	16	9	6	ECC 16-35
16-50	16-50	16-50	16-20	55	21	11	12	ECC 16-50
16-95	16-95	25-95	25-95	55	25	14	12	ECC 16-95
16-185	16-150	25-150	35-150	80	32	21	20	ECC 16-185

MECHANICAL CONNECTOR 0.6/1 kV WITH 2 HEXAGON SOCKET SCREWS OR 2 SHEAR-OFF-HEAD BOLTS



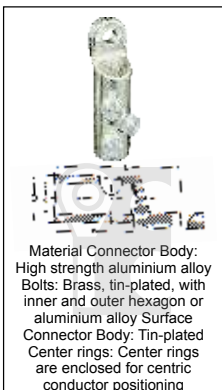
CABLE SIZE mm ² Al in mm ² acc. To VDE 0295				DIMENSIONS mm			Torque Moment in Nm	PRODUCT CODE
Round Stranded	Sector Stranded	Round Solid	Sector Solid	L	D	d		
16-35	16-25	16-25	16-35	40	17	9.4	6	ECC 16-35
25-95	25-95	25-95	25-95	55	55	14	12	ECC 16-95
35-185	35-185	25-95	35-185	80	80	21	20	ECC 16-185

MECHANICAL CONNECTOR UP TO 42 kV WITH SHEAR-OFF-HEAD BOLTS & TRANSFERS GROOVING



CABLE SIZE mm ² Al in mm ² acc. To VDE 0295			Torque Moment in Nm	DIMENSIONS mm				PRODUCT CODE
Round Stranded	Sector Stranded	Round Solid		L	d	D	b	
16-95	16-95	25-70	2	70	12.5	24	32	ECC 16-95
50-150	50-150	50-120	2	85	15.5	30	35	ECC 50-150
70-240	70-240	70-240	4	120	22 ¹⁾	35	56	ECC 40-240
70-240	70-240	70-240	4	120	22 ¹⁾	33	56	ECC 240-133
95-240	95-240	95-185	4	120	20	33	56	ECC95-240
120-300	120-300	120-240	4	142	20	38	67	ECC120-300
185-400	185-240/400	185-300	6	170	26	42	82	ECC 185-400
300-500	300-500	300-400	6	200	34	52	94	ECC 300-500

MECHANICAL CABLE LUG, CENTRIC WITH 1,2 OR 3 SHEAR-OFF-HEAD BOLTS



CABLE SIZE mm ² Al in mm ² acc. To VDE 0295			Torque Moment in Nm	DIMENSIONS mm				PALM HOLE mm	PRODUCT CODE
Round Stranded	Sector Stranded	Round Solid		L	d	D	b		
16-95	16-95	25-70	1	60	12.5	24	32	13	ECC 16-95
50-150	50-150	50-120	1	79	15.5	30	35	13	ECC 50-150
70-240	70-240	70-240	2	93.5	22 ¹⁾	35	56	13	ECC 70-240
95-240	95-240	95-185	2	95	20	33	56	13	ECC 95-240
								17	ECC 95-240
120-300	120-300	120-240	2	134	24	37	70	13	ECC 120-300
								17	ECC 120-300
185-400	185-400	185-400	3	158	26	42	86	17	ECC 185-400