

## C1 M12

### Material

Body: PC - Polycarbonate  
Sensor: PPA - Polyphthalamide



**How it works** Mounted on the booster pumps up to 1CV (1 HP) or parallel pipe, closing the electrical contact (**reed switch**) when the water reaches the level of the internal sensor.

- Details**
- Transparent display that shows lack or presence of water;
  - On/Off SPST output;
  - Electrical outlet in M12 Plug.

- Typical applications**
- Display and signaling the presence of liquids in pipes;
  - Protects the pump against dry running.



**Chemical products** require preliminary tests to confirm compatibility.

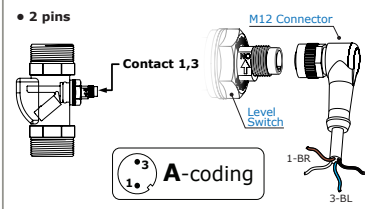
**Liquid with ferrous particles** should be avoided.

*Don't apply solvents or diluents, they cause chemical damage to polycarbonate.*

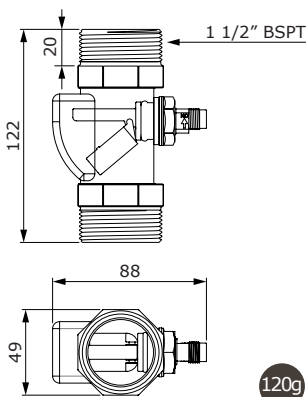
### Technical specifications

Maximum operating pressure	<b>7bar</b>
Operating temperature range	<b>1°C to 60°C</b>
Sealing	<b>Sealant tape</b>
Output connection	<b>M12 male plug (2 pins)</b> <b>M12 female connector NOT included</b>
Enclosure rating	<b>IP66</b>
Electrical contact	<b>Reed Switch 20W/VA</b>
Switching voltage	<b>110 / 220 Vac &amp; 12 / 24 Vdc</b>
Inlet/outlet port	<b>1 1/2" BSPT Male</b>

#### M12 Plug Sensors Installation



#### Dimensions (mm) and Weight



#### Mounting (Options for Pumps)

**NO**  
Working as  
Normally Open

Power rating  
**ABOVE 1CV**

Power rating  
**UNTIL 1CV**



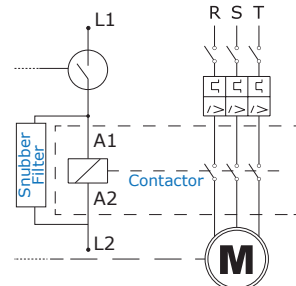
#### Important!

- For cables longer than 20 meters.
- Relay coupler, timing relay, frequency inverter.

A series **resistor** must be installed.

**Click and check how to install.**

#### Typical connection to contactor



level sensor | float switch | contrasseco | level display | protection | dry running | centrifugal pumps | parallel pipes

**Click and Check:**  
[Models and Prices](#) | [Datasheets](#) | [Operation Videos](#)

Flow Switches and Level Switches for liquids  
**Make it easy**